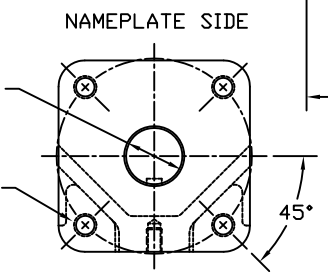


2.000/1.994 DIAMETER SHAFT
1/2 SQ. x 3.19 LONG KEYWAY
W/ .031 RADIUS INSIDE KEYWAY CORNERS
(TO BE USED W/ 1/2" X 3 3/16" KEY)

3/4-10 UNC TAP x 1.18 DEEP
(4) PLACES AS SHOWN ON
6.50 DIAMETER BOLT CIRCLE



REV	CHANGE	BY	CHK	APR	DATE
D	UPDATED SECTION A-A & VIEW B-B	CAW			02/15/07
C	REVISED VIEW B-B	CAW			07/27/06
B	REVISED SECTION A-A & VIEW B-B	BDC			3/15/05

MORIN® Birmingham, AL					
TITLE: MODEL B-210UC-D000 ACTUATOR					
DRAWN BY:	DATE:	CHECKER:	DATE:	APPROVAL:	DATE:
BDC	1/28/03				
SCALE:	REVISION:	DRAWING NO.:			
HALF	D				
SHEET	DWG. SIZE:				
1 of 1	D	S25B523D			