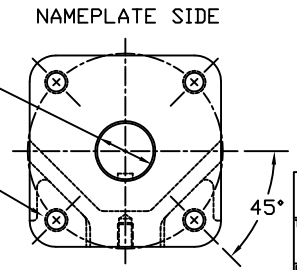


2.000/1.994 DIAMETER SHAFT
 1/2 SQ. x 3.19 LONG KEYWAY
 W/ .031 RADIUS INSIDE KEYWAY CORNERS
 (TO BE USED W/ 1/2" X 3 3/16" KEY)

3/4-10 UNC TAP x 1.18 DEEP
 (4) PLACES AS SHOWN ON
 6.50 DIAMETER BOLT CIRCLE



ISO (F16) MOUNTING PATTERN

F	UPDATED SECTION A-A & VIEW B-B	CAW		02/14/07
E	UPDATED VIEW B-B	CAW		07/26/06
D	UPDATED CYLINDER LENGTH TO CANTED	CAW		06/20/06
C	UPDATED HOUSING & POINTER	BDC		8/13/04
B	REVISED DETAIL SECTION A-A	BDC		4/19/04
REV	CHANGE	BY	CHK	APR
				DATE

MORIN® Birmingham, AL				
TITLE: MODEL B-270U-S000 ACTUATOR				
DRAWN BY:	DATE:	CHECKER:	DATE:	APPROVAL: DATE:
BDC	11/1/00			
SCALE:	REVISION:	DRAWING NO.:		
HALF	F			
SHEET	DWG. SIZE:			
1 of 1	D	S25B003F		