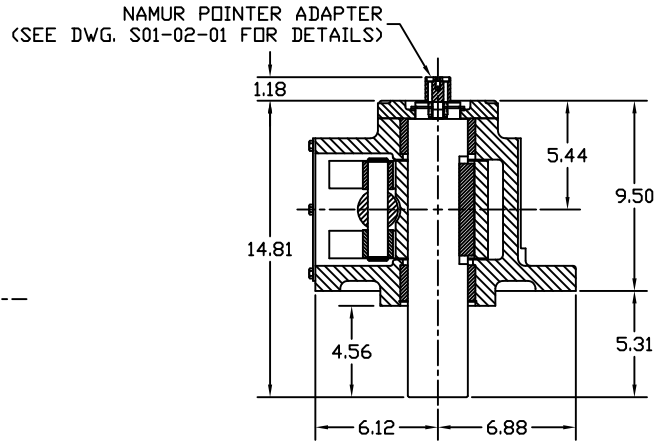
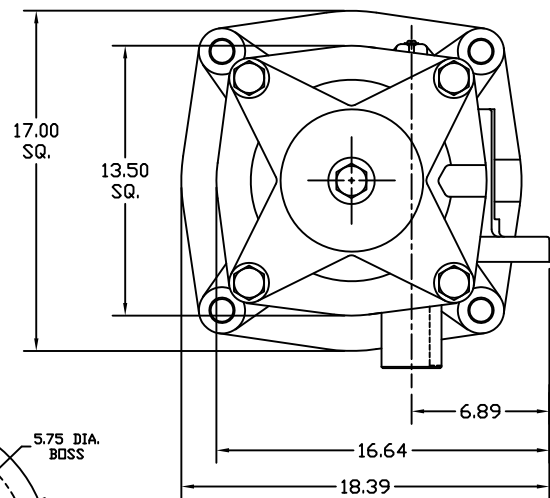
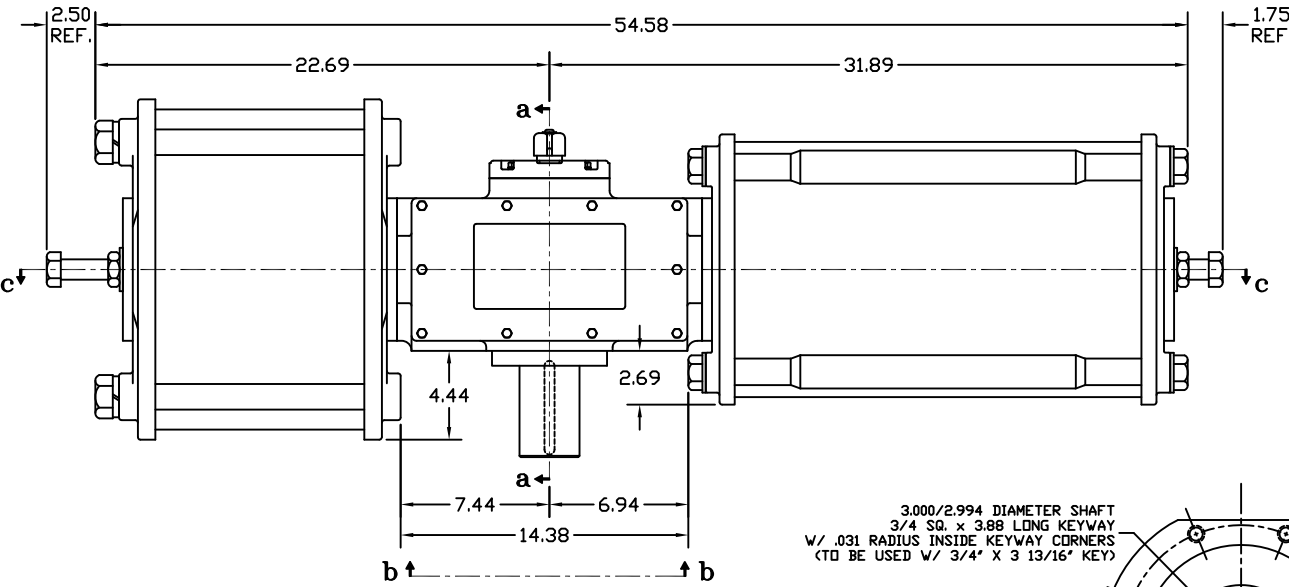


Section c-c

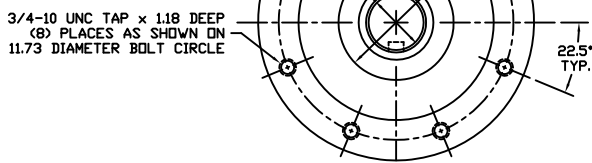


Section a-a

YOKE SHOWN AT MID-STROKE
POINTER OMITTED FOR CLARITY



3.000/2.994 DIAMETER SHAFT
3/4 SQ. x 3.88 LONG KEYWAY
W/ .031 RADIUS INSIDE KEYWAY CORNERS
(TO BE USED W/ 3/4" x 3 13/16" KEY)



View b-b
ISO F30 MOUNTING PATTERN

E	UPDATED VIEW B-B	CAW		04/30/13
D	UPDATED VIEW B-B & SECTION A-A	CAW		02/15/07
C	UPDATED VIEW B-B	CAW		07/11/06
B	UPDATED VIEW B-B & SECTION A-A	BDC		1/28/05
REV	CHANGE	BY	CHK	APR
				DATE

MORIN
www.morinact.com

Morin Actuator
110 Commerce Drive
Pellham, Alabama, U.S.A. 35124
(205) 663-0533

MODEL B-944UC-S000 ACTUATOR

DRAWN BY: BDC DATE: 2/13/03 CHECKED: DATE: APPROVED: DATE:

SCALE: 3X REVISION: E DRAWING NO.: S30B038E

SHEET 1 of 1 DWG. SIZE: D