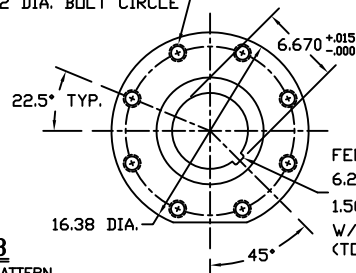


1-8 UNC-2B TAP x 1 3/4 DEEP
(8) PLACES AS SHOWN ON
14.02 DIA. BOLT CIRCLE



VIEW B-B
ISO F35 MOUNTING PATTERN
SHOWN IN CLOSED POSITION

MORIN®		Morph Actuator 110 Commerce Drive Pelham, Alabama, U.S.A. 35124 (205) 862-5533	
MODEL C-2385UC-D000 ACTUATOR			
DRAWN BY:	DATE:	CHECKED:	DATE:
CAW	06/19/08		
SCALE:	REVISION:	DRAWING NO.:	
FULL	D		
SHEET	DWG. SIZE:		
1 OF 1	E	S60B547D	

REV	CHANGE	BY	CHK	APR	DATE
D	UPDATED ADJUSTMENT SCREW SIZE AND LENGTH	CAW			04/26/11
C	CORRECTED ACES. PAD DETAIL: 1/4" VENT MIS 3/4" VENT	CAW			08/23/10
B	UPDATED VIEW B-B	CAW			08/26/08