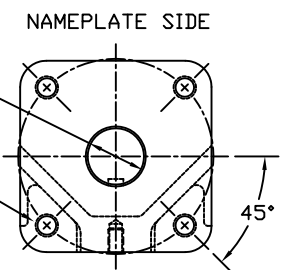


2.000/1.994 DIAMETER SHAFT
 1/2 SQ. x 3.19 LONG KEYWAY
 W/ .031 RADIUS INSIDE KEYWAY CORNERS
 (TO BE USED W/ 1/2" x 3 3/16" KEY)

3/4-10 UNC TAP x 1.18 DEEP
 (4) PLACES AS SHOWN ON
 6.50 DIAMETER BOLT CIRCLE



MORIN® Birmingham, AL			
TITLE: MODEL C-344U-S000 ACTUATOR			
DRAWN BY:	DATE:	CHECKER:	DATE:
CAW	08/11/06		
SCALE:	REVISION:	DRAWING NO.:	
HALF	B		
SHEET	DWG. SIZE:		
1 of 1	D	S25B165B	

REV	DESCRIPTION	BY	CHK	APR	DATE
B	UPDATED SECTION A-A & VIEW B-B CHANGE	CAW			02/20/07