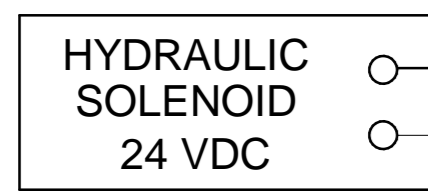


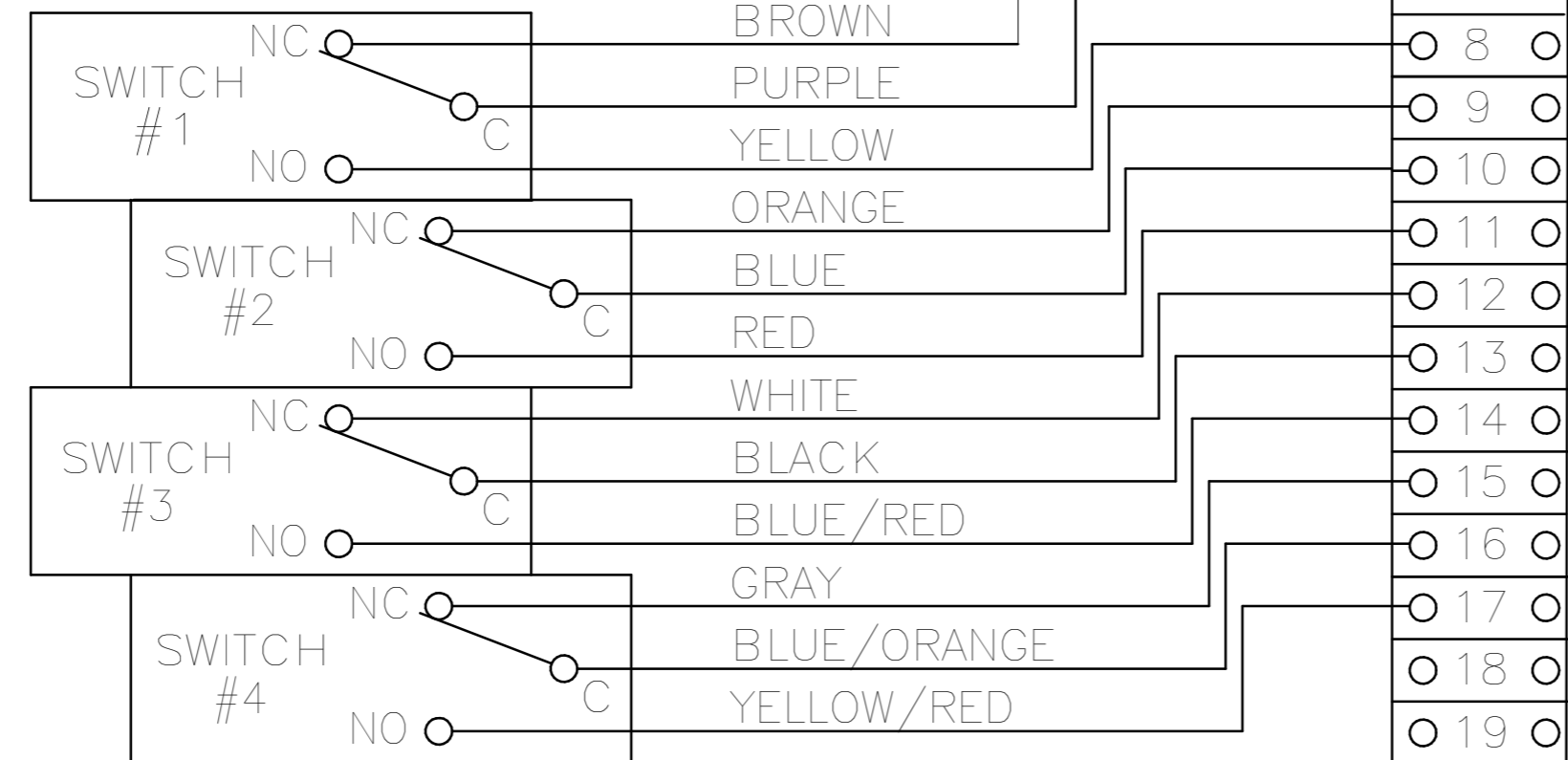
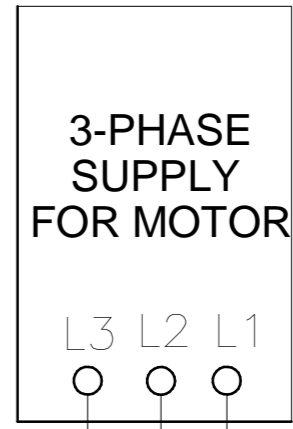
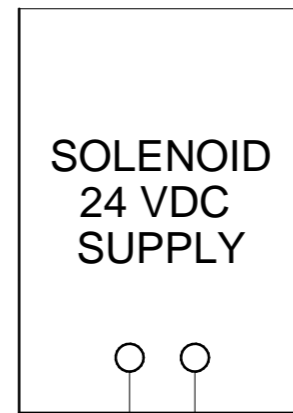
REVISIONS		
REV	ECN	DATE
00	RELEASED	17-Nov-2020

CUSTOMER SCOPE OF SUPPLY

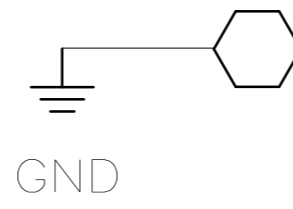
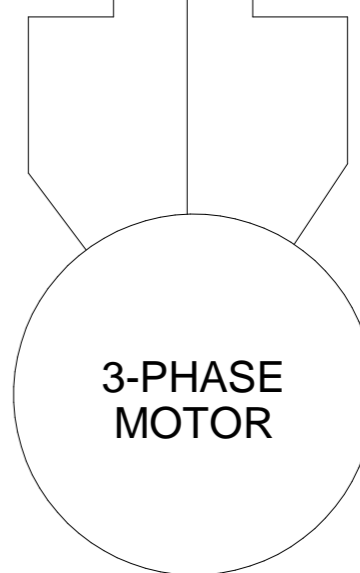
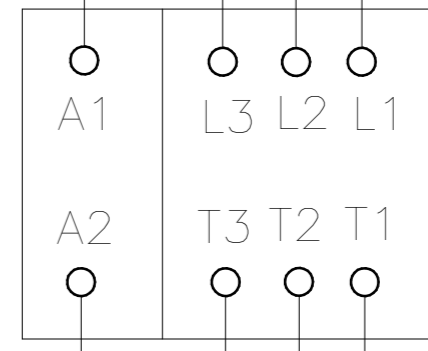
SWITCH BOX UNIT



WHEN USING ESD SWITCH (IF NEEDED) REMOVE JUMPER BETWEEN TERMINALS 1-2



OPEN INDICATION
CLOSED INDICATION
SPARE



<small>THIS DOCUMENT AND THE DATA DISCLOSED HEREIN OR HEREWITH IS NOT TO BE REPRODUCED, USED OR DISCLOSED IN WHOLE OR IN PART TO ANYONE WITHOUT THE PERMISSION OF EMERSON</small>	TITLE: WIRING SCHEMATIC		
	WIRING DRAWING, EHPX ACTUATOR 460/3/60 MOTOR AND 24 VDC SOLENOID		
	PURCHASE ORDER NO. -	PROJECT TITLE -	DRAWING NO. VA-ED-008-8677
	SALES ORDER NO. -	CUSTOMER NAME -	DRAWN BY: Naysa, Vajjayanti CHECKED BY: Gole, Dhananjay DWG. SIZE: A2 SHEET: 1 of 1 APPROVED BY: - REV. 00