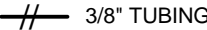



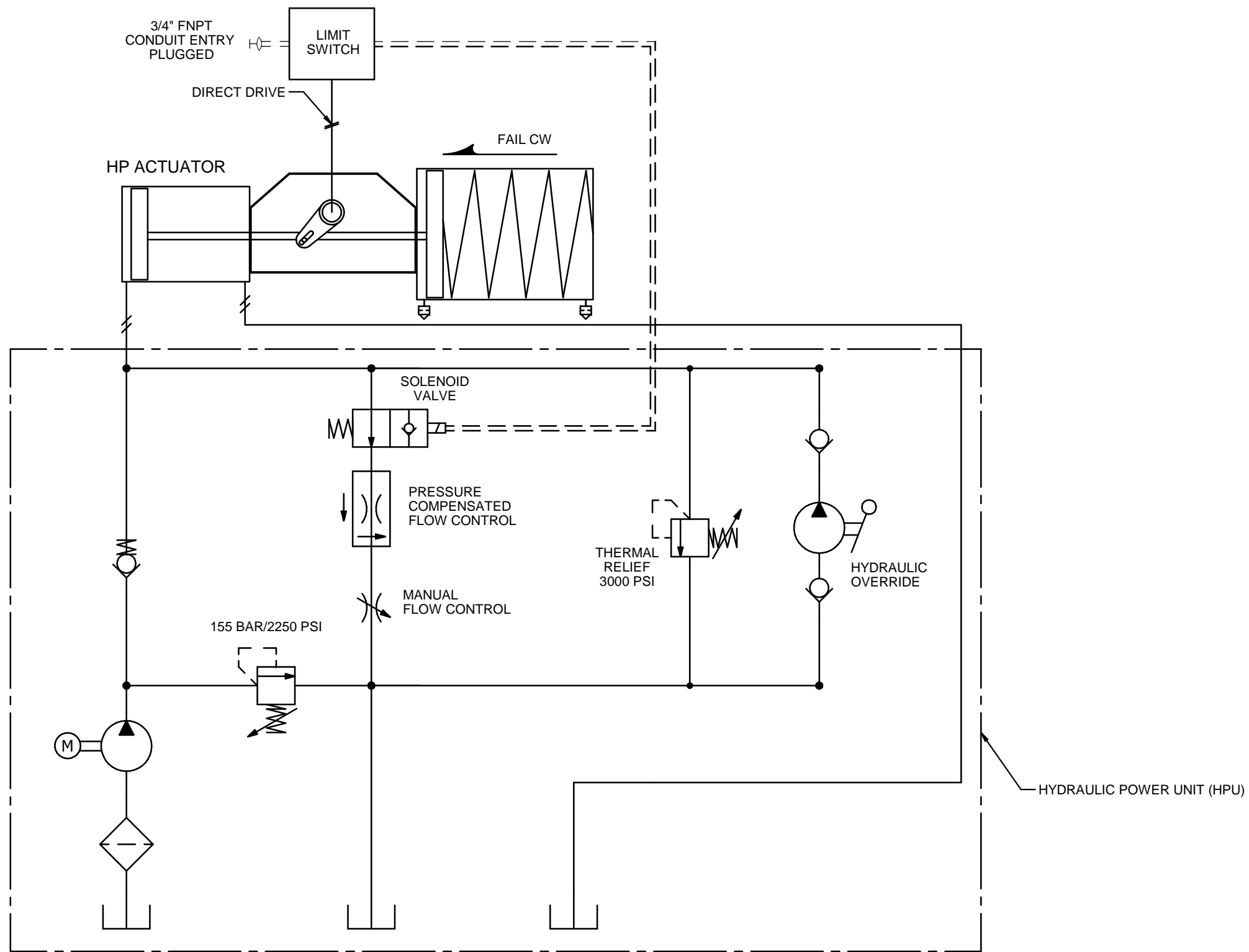


**LEGENDS:**

-  3/8" TUBING
-  ELECTRICAL CONNECTION
-  ELECTRICAL FIELD CONNECTION
-  HYDRAULIC CONNECTION
- CLOSE=CW OPEN=CCW



SOLENOID VALVE	MOTOR
115/1/60	115/1/60
115/1/60	230/1/60
24 VDC	115/1/60
24 VDC	230/1/60
24 VDC	460/3/60

**ACTUATOR FUNCTION:**  
 1. ACTUATOR SHOWN IN CLOSE (CW) POSITION.  
 2. APPLY POWER TO OPEN (CCW) LINE VALVE.  
 2. ACTUATOR FAILS IN CLOSE (CW) POSITION ON LOSS OF POWER SUPPLY.  
 3. ACTUATOR FAILS IN CLOSE (CW) POSITION ON LOSS OF ESD (EMERGENCY SHUT DOWN) SIGNAL TO SOLENOID.

REV	ECN	DESCRIPTION	DATE
00	INITIAL	-	11-Nov-2020

REVISION HISTORY

THIS DOCUMENT AND THE DATA DISCLOSED HEREIN OR HEREWITH IS NOT TO BE REPRODUCED, USED OR DISCLOSED IN WHOLE OR IN PART TO ANYONE WITHOUT THE PERMISSION OF EMERSON

**SCHEMATIC**

TITLE: PIPING SCHEMATIC, EHP ACTUATOR, EXPLOSION PROOF HPU, INTEGRATED HYDRAULIC OVERRIDE AND WESTLOCK LIMIT SWITCH

CUSTOMER NAME: -

PROJECT TITLE: -

**EMERSON**

PURCHASE ORDER No: -	DRAWN BY: Nayse, Vijayanti
SALES ORDER No: -	CHECKED BY: Gole, Dhananjay
SHEET 1	SIZE A3
DRAWING No: VA-ED-008-3836	REV. 00