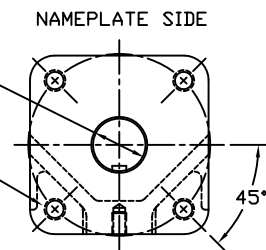


2.000/1.994 DIAMETER SHAFT
 1/2 SQ. x 3.19 LONG KEYWAY
 W/ .031 RADIUS INSIDE KEYWAY CORNERS
 (TO BE USED W/ 1/2" X 3 3/16" KEY)

3/4-10 UNC TAP x 1.18 DEEP
 (4) PLACES AS SHOWN ON
 6.50 DIAMETER BOLT CIRCLE



VIEW B-B
 ISO (F16) MOUNTING PATTERN

MORIN® Birmingham, AL			
TITLE: MODEL HP25U-4-2DA ACTUATOR			
DRAWN BY: CAW	DATE: 08/02/06	CHECKER: DATE:	APPROVAL: DATE:
SCALE: HALF	REVISION: C	DRAWING NO.:	
SHEET 1 OF 1	DWG. SIZE: D	HP25B508C	

REV	CHANGE	BY	CHK	APR	DATE
C	ELIMINATED REF. DIM. FROM HYD CYL CAP NUT	CAW			02/25/08
B	UPDATED SECTION A-A & VIEW B-B	CAW			02/21/07