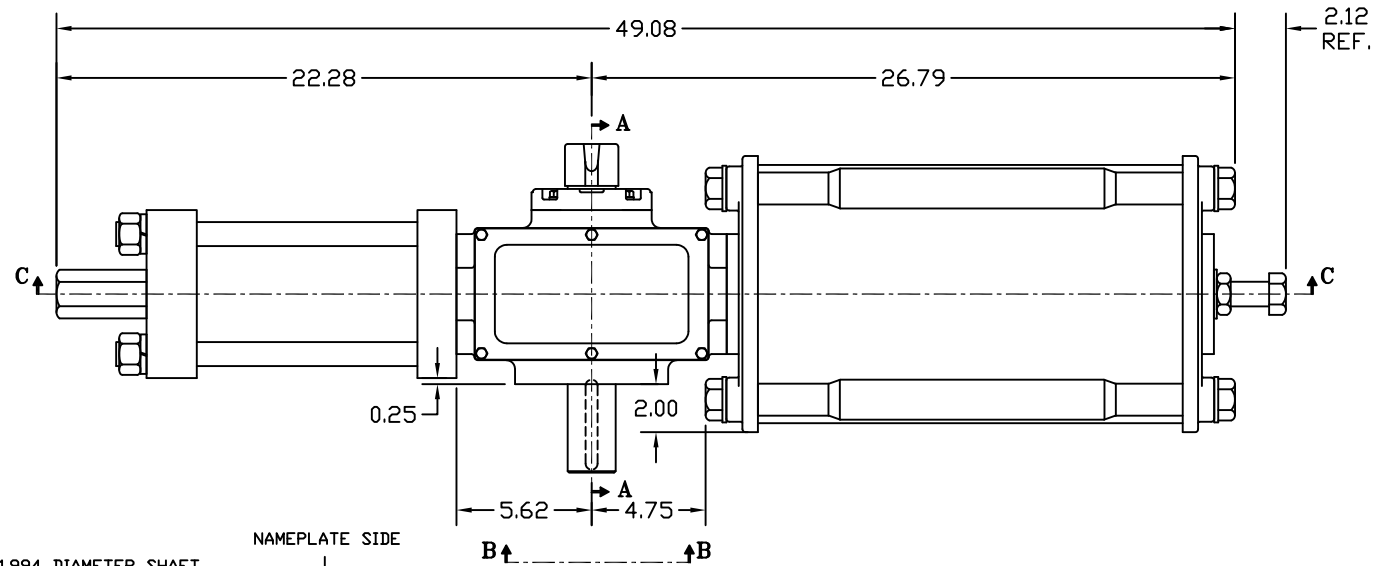
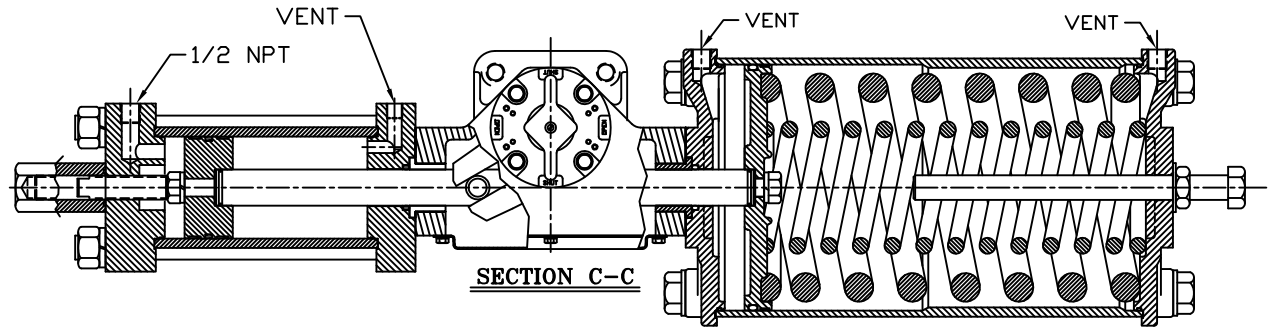
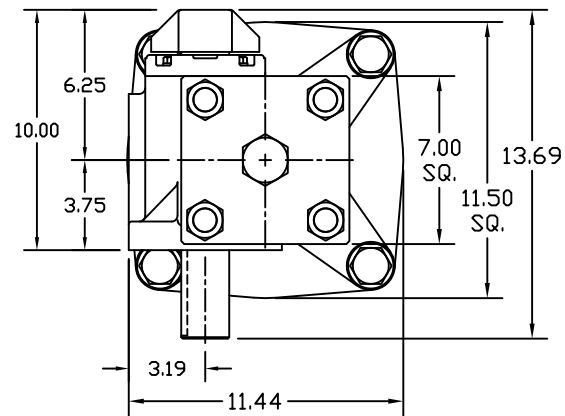
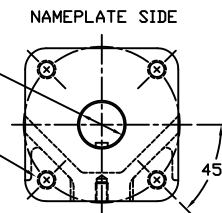


SECTION A-A
YOKE SHOWN AT MID-STROKE
POINTER OMITTED FOR CLARITY



2.000/1.994 DIAMETER SHAFT
1/2 SQ. x 3.19 LONG KEYWAY
W/ .031 RADIUS INSIDE KEYWAY CORNERS
(TO BE USED W/ 1/2" x 3 3/16" KEY)

3/4-10 UNC TAP x 1.18 DEEP
(4) PLACES AS SHOWN ON
6.50 DIAMETER BOLT CIRCLE



VIEW B-B
ISO (F16) MOUNTING PATTERN

MORIN www.morinact.com		Morin Actuator 110 Commerce Drive Pittman, Alabama, U.S.A. 35124 (205) 663-0533	
MODEL HP25UC-4-1-420S000 ACTUATOR			
DRAWN BY:	DATE:	CHECKED:	DATE:
CAW	08/22/06		
SCALE:	REVISION:	D	DRAWING NO.:
1 : 2.5			HP25B013D
SHEET	DWG. SIZE:	D	
1 of 1			

D	UPDATED SECTION A-A & HOUSING COVER TO CANTED	CAW			08/03/09
C	CHANGED HP ADAPTOR PORT TO VENT	CAW			04/15/06
	REMOVED REF. DIM. FOR HP CAP NUT/EXTENDED O.A. DIM.				
B	UPDATED SECTION A-A & VIEW B-B	CAW			02/21/07
REV	CHANGE	BY	CHK	APR	DATE