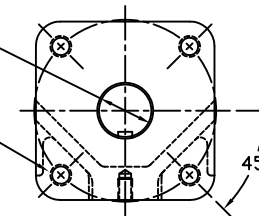


2.000/1.994 DIAMETER SHAFT
 1/2 SQ. x 3.19 LONG KEYWAY
 W/ .031 RADIUS INSIDE KEYWAY CORNERS
 (TO BE USED W/ 1/2" X 3 3/16" KEY)

3/4-10 UNC TAP x 1.18 DEEP
 (4) PLACES AS SHOWN ON
 6.50 DIAMETER BOLT CIRCLE

NAMEPLATE SIDE



VIEW B-B

ISO (F16) MOUNTING PATTERN

MORIN® Birmingham, AL	
TITLE: MODEL HP25UC-4-2DA ACTUATOR	
DRAWN BY: CAW	DATE: 08/22/06
CHECKER:	DATE:
APPROVAL:	DATE:
SCALE: HALF	REVISION: D
SHEET 1 OF 1	DWG. SIZE: D
DRAWING NO.: HP25B512D	

D	UPDATED SECTION A-A & HOUSING COVER TO CANTED	CAW			08/03/09
C	REMOVED REF. DIM. ON HP CAP NUT/EXTENDED OA DIM.	CAW			04/16/08
	CHANGED HP ADAPTOR PORTS TO VENTS				
B	UPDATED SECTION A-A & VIEW B-B	CAW			02/21/07
REV	CHANGE	BY	CHK	APR	DATE