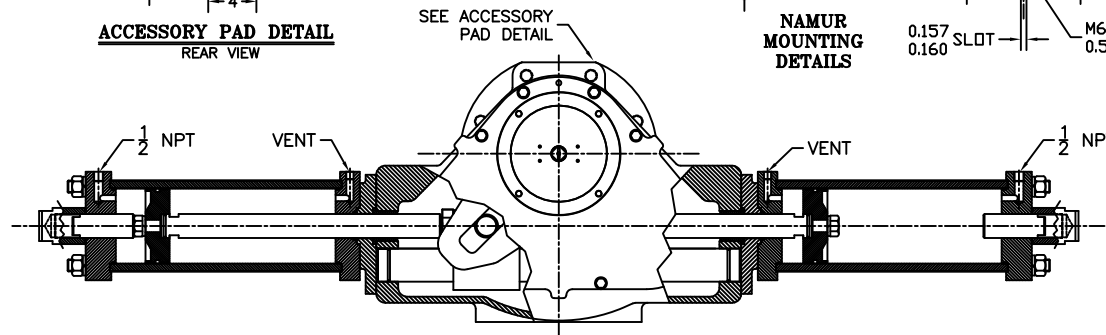
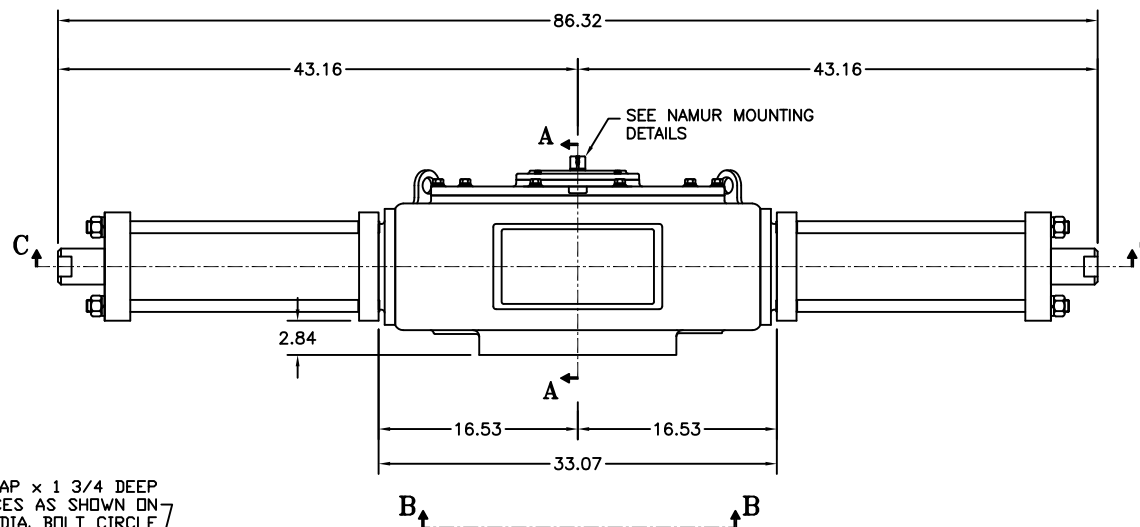
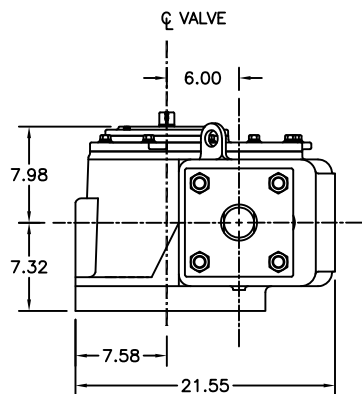


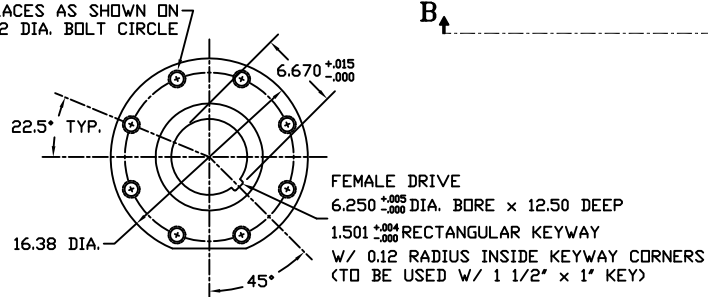
YOKE SHOWN AT MID-STROKE
ACCESSORIES OMITTED FOR CLARITY



SECTION C-C



1-8 UNC-2B TAP x 1 3/4 DEEP
(8) PLACES AS SHOWN DN
14.02 DIA. BOLT CIRCLE



ISO F35 MOUNTING PATTERN
SHOWN IN CLOSED POSITION

| | | | |
|-----------------------------------|------------|--|-------|
| MORIN | | Morph Actuator 110 Commerce Drive Pelham, Alabama, U.S.A. 35124 <small>(205) 662-5533</small> | |
| MODEL HP65U-6-2DA ACTUATOR | | | |
| DRAWN BY: | DATE: | CHECKED: | DATE: |
| CAW | 02/27/08 | | |
| SCALE: | REVISION: | DRAWING NO.: | |
| 1:4 | D | | |
| SHEET | DWG. SIZE: | | |
| 1 of 1 | E | HP60B506D | |

| | | | | |
|-----|---|-----|------|----------|
| D | CORRECTED ACCESS. PAD DETAIL: 1/4" VENT NWS 3/4" VENT | CAW | | 02/24/10 |
| C | UPDATED VIEW B-B | CAW | | 01/24/08 |
| B | CHANGED HP ADAPTOR PORTS TO VENTS | CAW | | 01/22/08 |
| REV | CHANGE | BY | CHK | APR |
| | | | DATE | |