

PLA/PLAS PNEUMATIC ACTUATORS

Double acting and single acting pneumatic linear actuators for on-off and regulating service



FEATURES

- Electroless nickel plated and polished cylinder for corrosion resistance and minimal friction.
- Hard chromium plated and polished piston rod in stainless steel for corrosion resistance and minimum friction.
- Piston rod support bushing in bronze with sintered PTFE provides minimal friction and extended service life.
- PLAS totally enclosed spring cartridge ensures personnel safety during assembly or disassembly.
- Compact design available to allow space footprint reduction without reducing requested thrust value.
- Fabricated carbon steel adapter spool with accessories provision designed specifically for adaptation to any type of valve.
- Accept an extensive range of accessories:
 - Complete control panel
 - Emergency tank
 - Manual hand pump
 - PST device
 - Regulating device (ECU1000)
- Special coatings for offshore or corrosive environments.
- Special versions with built-in dump valve and damper for 'quick spring operation'.
- Double cylinder available to increase output capability.
- Housing in painted carbon steel.
- Spool in painted carbon steel or unpainted SS316 as option.

GENERAL APPLICATION

PLA/PLAS pneumatic actuators are designed for the automation of gate, globe and all other linear valves

APPROVALS

Safety integrity level: IEC61508 -1÷7 2010
Suitable for use in SIL 3 applications

Area classifications: (ATEX) II2GD 135 (T4)

Enclosure standard: (IEC60529)-IP67M ANSI/NEMA250 NEMA 4-4X-6

Pressure equipment directive: PED 97/23/EC

Machinery directive: 2006/42/EC

TECHNICAL DATA

Design pressure: 12 barg

Supply medium: Air, nitrogen or sweet gas
Sour gas version available

Output thrust:
PLA: Double acting thrust up to 1.600.000 N
Spring ending thrust up to 450.000 N
Spring starting thrust 540.000 N

PLAS: Spring ending thrust up to 450.000 N
Spring starting thrust 540.000 N

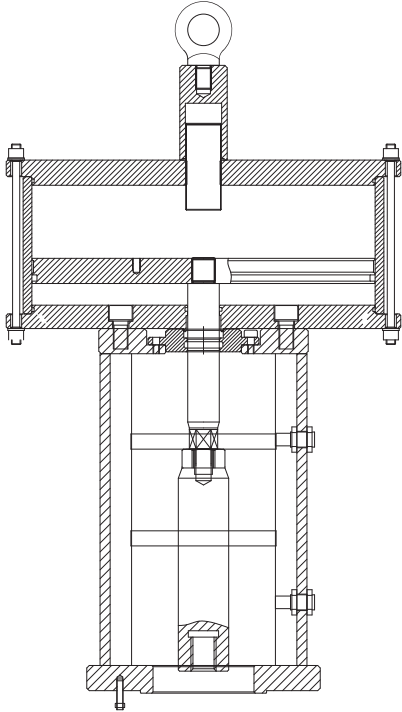
Ambient temperature: From -60°C to 100°C

Multi spring version available on request

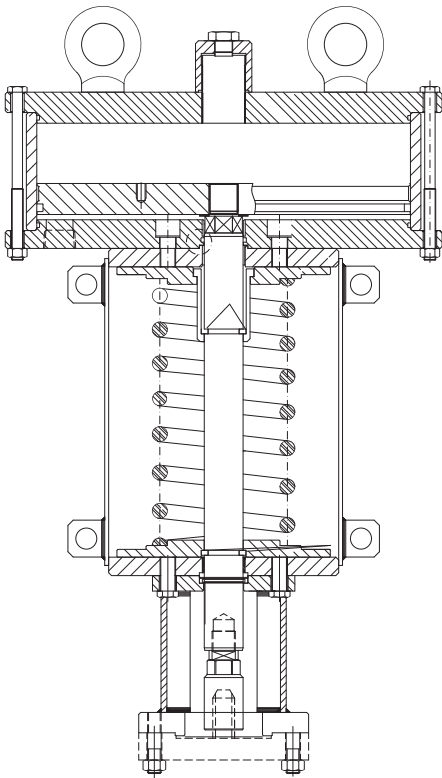
PLA/PLAS PNEUMATIC ACTUATORS

SECTIONAL DRAWINGS AND APPLICATION PICTURES

PLA DOUBLE ACTING



PLAS SPRING RETURN



Note: dimensions are according to requested valve stroke and thrust.

PLA/PLAS PNEUMATIC ACTUATORS

SELECTION GUIDE

PNEUMATIC DOUBLE ACTING ACTUATOR

| Example: | PLA | 250K | 135 | 300 | MHP |
|-------------|---------------------------|------|-----|-----|-----|
| PLA | Actuator series | | | | |
| 250K | Max. allowable thrust (N) | | | | |
| 135 | Cylinder diameter (mm) | | | | |
| 300 | Stroke (mm) | | | | |
| MHP | Manual override | | | | |

PNEUMATIC SPRING RETURN ACTUATOR

| Example: | PLAS | 250K | 135 | 100K | CL | 300 | MHP |
|-------------|---------------------------|------|-----|------|----|-----|-----|
| PLAS | Actuator series | | | | | | |
| 250K | Max. allowable thrust (N) | | | | | | |
| 135 | Cylinder diameter (mm) | | | | | | |
| 100K | Spring ending thrust (N) | | | | | | |
| CL | Spring action | | | | | | |
| 300 | Stroke (mm) | | | | | | |
| MHP | Manual override | | | | | | |



Biffi reserve the the right to change product designs and specifications without notice.

Biffi Italia S.r.L.

Località Caselle San Pietro, 420, 29017 Fiorenzuola d'Arda (PC) ITALY Ph: +39 (0)523 944 411 E-mail: biffi_italia@biffi.it www.biffi.it